



PACIFIC CARRIERS LIMITED

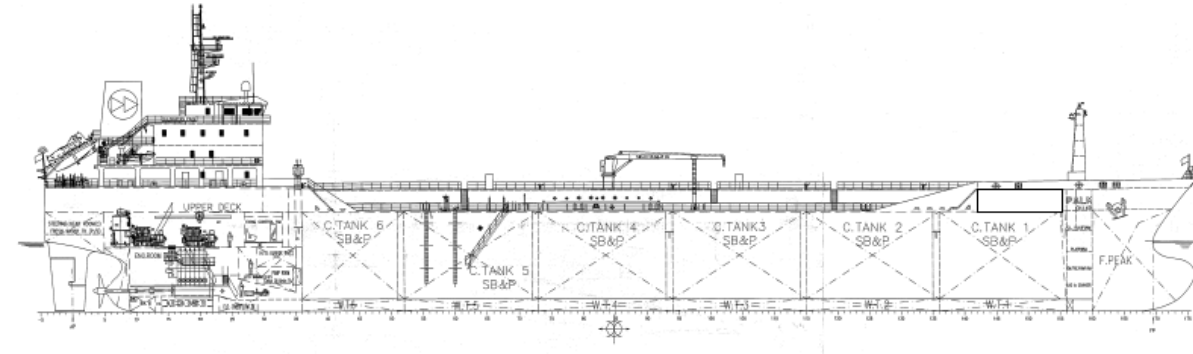
POCKET PLAN

TANKER



KALIMANTAN PALM

17,066 MT SMALL RANGE TANKER



MAIN ENGINE

STX MAN B&N 6S35 MC-MK7

DEADWEIGHT

17,066 MT

LADEN SPEED

12.0 KNOTS

AUXILIARY ENGINE

3 x DAIHATSU 5DK20 (660kW@900 rpm)

TOTAL: 19,80kW

CLASS

AMERICAN BUREAU OF SHIPPING (ABS)

+A1(E), OIL AND CHEMICAL TANKER, (E), +
AMS, +ACCU, ESP, CRC

CARGO TANKS

CARGO CAPACITY 19093.36m³

CARGO SEGREGATIONS 4

TANK COATING PHENOLIC EPOXY

CARGO PUMP SYSTEM

PUMPING RATE 500m³/h

SCREW

BUNKER TANKS

VLSFO TANK CAPACITY 685.72 m³

NO. OF VLSFO TANKS 4

MGO TANK CAPACITY 93.58 m³

NO. OF MGO TANKS 3

WATER BALLAST

SEGREGATED BALLAST NO

PUMPING RATE 300m³/h

IMO CLASS

TYPE II AND III

MAIN DIMENSION

LOA 145.15 m

BEAM 23.00 m

DEPTH 12.50 m

DRAFT (TROPICAL) 8.983 m

DRAFT (SUMMER) 8.80 m

CARGOES

CLEAN PETROLEUM PRODUCTS

DIRTY PETROLEUM PRODUCTS

VEGETABLES OILS

BIO-FUEL BLENDS

FATTY ACID METHYL ESTER (FAME)