



PACIFIC CARRIERS LIMITED

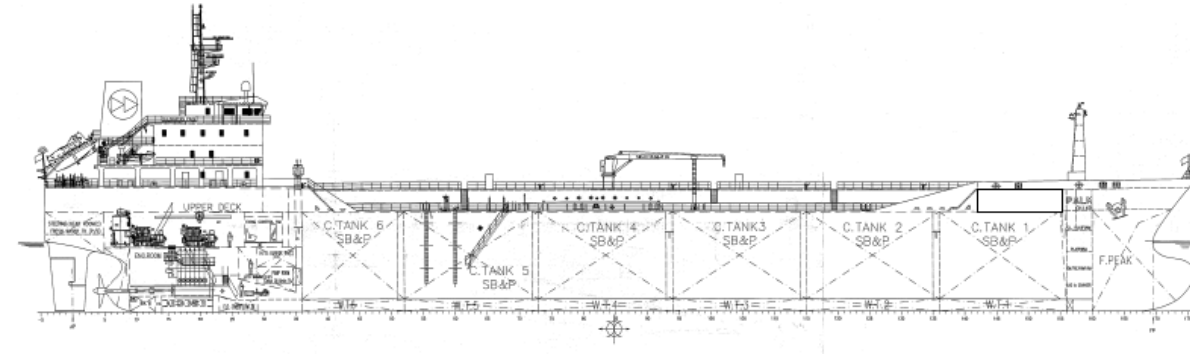
POCKET PLAN

TANKER



SUMATRA PALM

16,989 MT SMALL RANGE TANKER



MAIN ENGINE

STX MAN B&N 6S35 MC-MK7

DEADWEIGHT

16,989 MT

LADEN SPEED

12.0 KNOTS

AUXILIARY ENGINE

DAIHATSU 5DK-20 3 x 660kW

TOTAL: 19,80kW

CLASS

AMERICAN BUREAU OF SHIPPING (ABS)

+A1(E), Oil/Chemical

tanker, ESP, +AMS, +ACCU

CARGO TANKS

CARGO CAPACITY 19419.20m³

CARGO SEGREGATIONS 4

TANK COATING PHENOLIC EPOXY

CARGO PUMP SYSTEM

PUMPING RATE 500m³/h

SCREW

BUNKER TANKS

VLSFO TANK CAPACITY 687.346 m³

NO. OF VLSFO TANKS 3

MGO TANK CAPACITY 78.603 m³

NO. OF MGO TANKS 3

WATER BALLAST

SEGREGATED BALLAST NO

PUMPING RATE 300m³/h

IMO CLASS

TYPE II AND III

MAIN DIMENSION

LOA 144.47 m

BEAM 23.03 m

DEPTH 12.50 m

DRAFT (TROPICAL) 8.983 m

DRAFT (SUMMER) 8.80 m

CARGOES

CLEAN PETROLEUM PRODUCTS

DIRTY PETROLEUM PRODUCTS

VEGETABLES OILS

BIO-FUEL BLENDS

FATTY ACID METHYL ESTER (FAME)