

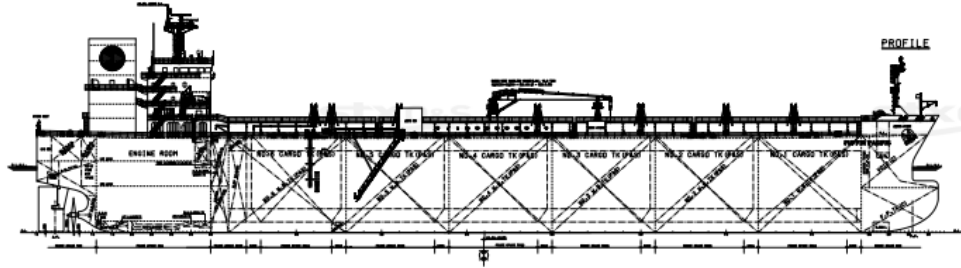


PACIFIC CARRIERS LIMITED

POCKET PLAN

TANKER





PIURA PACIFIC

49,805.5 MT MEDIUM RANGE TANKER

MAIN ENGINE

7,820 Kw STX MAN B&W 6G50ME-C9.5

DEADWEIGHT

49805.5 MT

LADEN SPEED

13.5

AUXILIARY ENGINE

3 X Yanmar 6EY22ALW (1020Kw@900 RPM)

TOTAL: 3,060 kW

CLASS

American Bureau of Shipping

+A1, (E), Oil /Chemical Carrier, CSR,, AB-CM, +AMS, +ACCU, ESP, CPS, UWILD, BWE, BWT, CRC(SP,SC-PL+), ENVIRO, IHM, RRDA, TCM, VEC-L, SPMA, EGC-SOx, ECTC(C), LNG Fuel Ready Level 3

CARGO TANKS

CARGO CAPACITY 100% 52532.197 m³

CARGO SEGREGATIONS 6

TANK COATING PHENOLIC EPOXY

CARGO PUMP SYSTEM

PUMPING RATE 12 x 600 M³

FRAMO Submerged

BUNKER TANKS

HFO TANK CAPACITY 100% 1405.7 m³

NO. OF HFO TANKS 4+2

MGO TANK CAPACITY 100% 353.1 m³

NO. OF MGO TANKS 3

WATER BALLAST

SEGREGATED BALLAST Yes

PUMPING RATE 2 x 750 m³

IMO CLASS

TYPE II &III

MAIN DIMENSION

LOA 182.90M

BEAM 32.2M

DEPTH 19.1M

DRAFT (TROPICAL) 13.577M

DRAFT (SUMMER) 13.30M

CARGOES

CLEAN PETROLEUM PRODUCTS

FATTY ACID METHYL ESTER (FAME)

DIRTY PETROLEUM PRODUCTS