



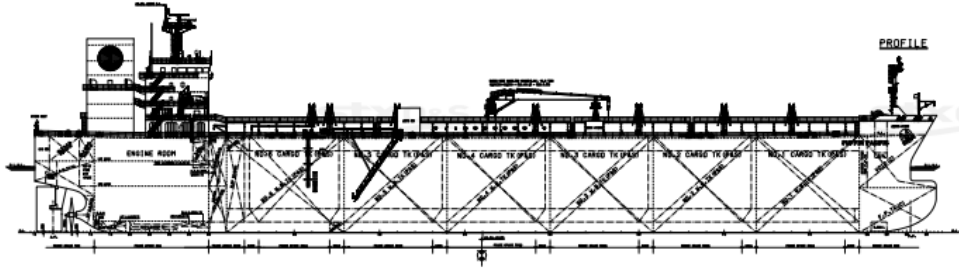
# PACIFIC CARRIERS LIMITED

POCKET PLAN

TANKER

---





# PINTAIL PACIFIC

## 49,805.5 MT MEDIUM RANGE TANKER

### MAIN ENGINE

7,820 Kw STX MAN B&W 6G50ME-C9.5

### DEADWEIGHT

49805.5 MT

### LADEN SPEED

13.5

### AUXILIARY ENGINE

3 X Yanmar 6EY22ALW (1020Kw@900 RPM)

### TOTAL: 3,060 kW

### CLASS

American Bureau of Shipping

+A1, (E), Oil /Chemical Carrier, CSR,, AB-CM, +AMS, +ACCU, ESP, CPS, UWILD, BWE, BWT, CRC(SP,SC-PL+), ENVIRO, IHM, RRDA, TCM, VEC-L, SPMA, EGC-SOx, ECTC(C), LNG Fuel Ready Level 3

### CARGO TANKS

CARGO CAPACITY 100% 52532.197 m<sup>3</sup>

CARGO SEGREGATIONS 6

TANK COATING PHENOLIC EPOXY

### CARGO PUMP SYSTEM

PUMPING RATE 12 x 600 M<sup>3</sup>

FRAMO Submerged

### BUNKER TANKS

HFO TANK CAPACITY 100% 1405.7 m<sup>3</sup>

NO. OF HFO TANKS 4+2

MGO TANK CAPACITY 100% 353.1 m<sup>3</sup>

NO. OF MGO TANKS 3

### WATER BALLAST

SEGREGATED BALLAST Yes

PUMPING RATE 2 x 750 m<sup>3</sup>

### IMO CLASS

TYPE II &III

### MAIN DIMENSION

LOA 182.90M

BEAM 32.2M

DEPTH 19.1M

DRAFT (TROPICAL) 13.577M

DRAFT (SUMMER) 13.30M

### CARGOES

CLEAN PETROLEUM PRODUCTS

FATTY ACID METHYL ESTER (FAME)

DIRTY PETROLEUM PRODUCTS